

Forecasts of Aviation Activity

FAR Part 150 Study

Piedmont Triad International Airport

Greensboro, North Carolina

November 2004

General Forecast Information

- Forecast Years: 2006 and 2011
 - *FAR Part 150 §150.21 “The noise exposure based on forecast operations at the airport for the fifth calendar year beginning after the date of submission..”*
- Forecast was developed in conjunction with:
 - Airport Authority Staff
 - PTIA ATCT
 - PTIA Fixed Based Operators (FBO’s)
 - FAA’s Division of Aviation Policy and Plans (APO)
 - FedEx

Historical Commercial Operations

Year	Air Carrier	Commuter /Air Taxi	Total
1984	45,686	10,942	56,628
1985	53,881	7,762	61,643
1986	53,816	8,191	62,007
1987	51,126	9,907	61,033
1988	49,572	7,888	57,460
1989	44,183	11,270	55,453
1990	44,642	16,274	60,916
1991	39,114	16,568	55,682
1992	37,240	18,739	55,979
1993	39,946	21,132	61,078
1994	80,128	22,788	102,916
1995	73,220	40,287	113,507
1996	47,820	30,231	78,051
1997	40,595	23,818	64,413
1998	44,280	23,208	67,488
1999	41,611	27,289	68,900
2000	39,375	31,840	71,215
2001	34,067	37,397	71,464
2002	27,512	37,992	65,504
2003	22,920	47,633	70,553

Source: FAA 2003 Scenario TAF from 1976 to 2002, March 2004.

FAA ATADS from 1990 to 2002, May 2004.

2003 FAA 7230

Historical Cargo Operations

Year	Operations		
	FedEx	Other All Cargo	Total
1995	0	7,100	7,100
1996	1,766	4,930	6,696
1997	494	2,588	3,082
1998	2,024	7,680	9,704
1999	1,506	7,686	9,192
2000	1,280	7,158	8,438
2001	1,290	4,986	6,276
2002	2,204	3,348	5,552
2003	2,088	3,476	5,564

Source: Piedmont Triad International Airport, Airport Activity Records, July 2004.

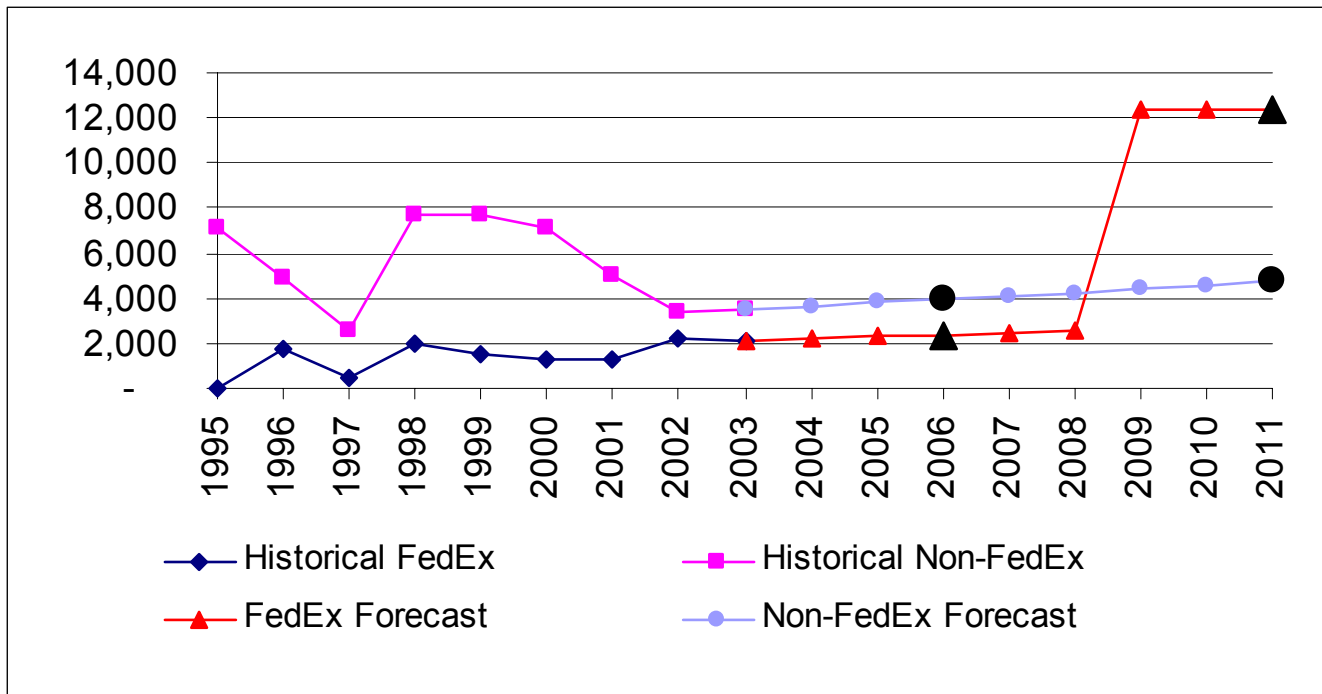
Forecast Methods

- Trend Analysis
- Regression Analysis
- Market Share Analysis
 - National Levels
 - State of North Carolina Levels
- Growth Scenario
 - FAA TAF Growth Rate Applied to Historical 2003 Operational Counts

FedEx Forecast Assumptions

- 24 Arrivals/24 Departures per Day
- Total Number of FedEx Cargo Operations Remains Constant from 2009 through 2011

Forecast of Cargo Operations



Year	FedEx		Other	Total
	Non-Hub	Hub	All Cargo	
2003	2,088		3,476	5,564
2006	2,369		3,944	6,313
2011		12,350	4,757	17,107

Source:

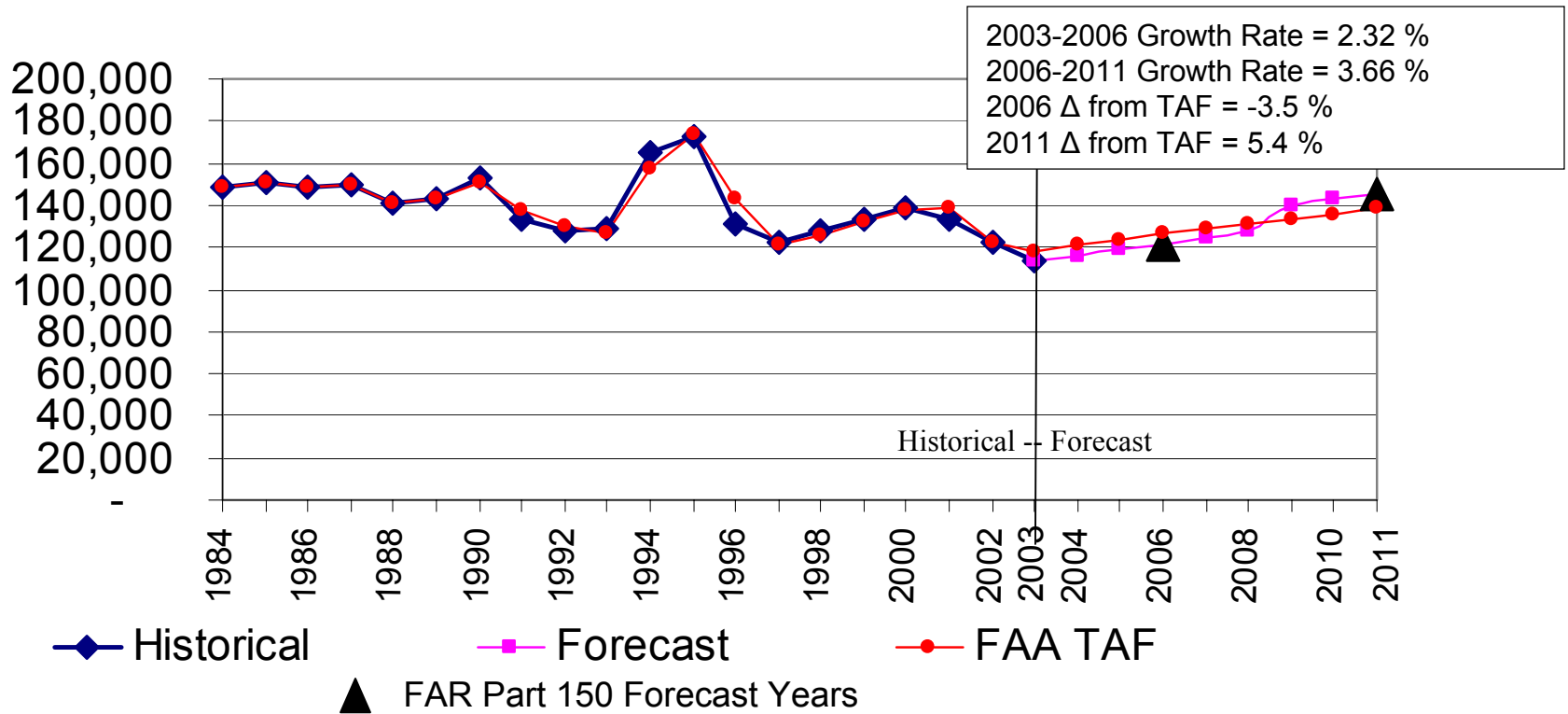
FAA Aerospace Forecast, FY 2004-2015, Table I-6, page I-29, March 2004.

Piedmont Triad International Airport, Airport Records, July 2004.

Piedmont Triad International Airport, 1998 Master Plan Update.

FedEx Planning, November, 2004.

FAR Part 150 Forecast – Total Operations



Year	Operations									
	Itinerant						Local			TOTAL
	Air Carrier	Commuter	Cargo	GA	Military	Total	GA	Military	Total	
2003	16,675	42,517	5,564	40,699	551	106,005	7,462	282	7,744	113,749
2006	16,785	48,259	6,313	41,834	559	113,751	7,646	445	8,091	121,842
2011	16,422	58,498	17,107	44,621	559	137,208	8,174	445	8,619	145,827

Source: URS, 2004.